

VALVE REGULATED LEAD-ACID RECHARGEABLE BATTERY

DC Series

Deep Cycle series batteries are designed to have a large amount of stored current discharged between charging sessions, with very heavy non-porous battery plates to withstand repeated major discharging and charging cycle(deep cycle). The Deep-cycle batteries uses a different chemistry for the plates active paste material, and a slightly stronger electrolyte than normal battery electrolyte, which allows for a much longer life in deep cycle applications.

FL121500DC

(12V150Ah/10hr)

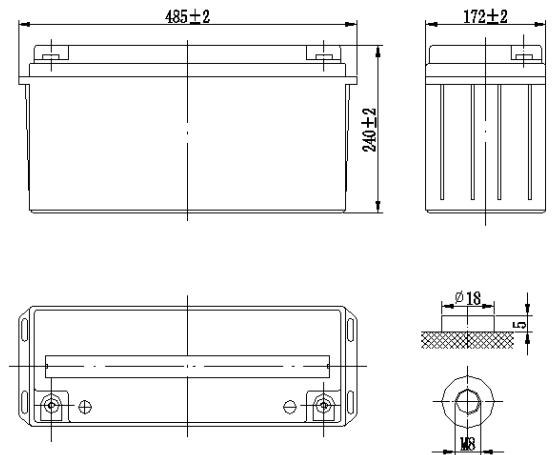


Application

- Alarm System
- Cable Television
- Power tools
- Emergency Power System
- Security System
- Medical Equipment
- Solar and Wind Power System
- Communication Equipment
- Control Equipment
- Toys

General Features

- Sealed and maintenance free operation.
- Non-Spillable construction design.
- ABS containers and covers (UL94HB, UL94V-0) optional.
- Safety valve installation for explosion proof .
- High quality and high reliability.
- Exceptional deep discharge recovery performance.
- Low self discharge characteristic.
- Flexibility design for multiple install positions.



CONSTRUCTION

Component	Positive plate	Negative plate	Container	Cover	Safety valve	Terminal	Separator	Electrolyte
Raw material	Lead dioxide	Lead	ABS	ABS	Rubber	Copper	Fiberglass	Sulfuric acid

TECHNOLOGY PARAMETER

Battery model	FL121500DC			
Designed Cycle Life	>350 Cycles @ -0.5CA to 9.6V			
Capacity (25℃)	20HR(7.63A, 10.8V)	10HR(15A, 10.8V)	5HR(25.3A, 10.5V)	1HR(108A, 9.60V)
	152.6Ah	150Ah	126.5Ah	108Ah
Dimensions	Length	Width	Height	Total Height
	485±2mm	172±2mm	240±2mm	240±2mm
Approx. weight (±3%)	42Kg(92.59lbs)			
Internal resistance	Full charged at 25℃: Approx. 4mOhms			
Self discharge	3% of capacity declined per month at 25℃ (average)			
Capacity Affected by Temp.(10HR)	40 ℃	25 ℃	0 ℃	-15 ℃
	102%	100%	85%	65%
Charge Voltage (25℃)	Cycle use		Float use	
	14.4-14.7V(-30mV/℃), max. Current: 37.5A		13.6-13.8V(-20mV/℃)	

VALVE REGULATED LEAD-ACID RECHARGEABLE BATTERY

FL121500DC (12V150Ah/10hr)

Constant current discharge ratings-amperes at 25°C

End Point Volts/Cell	5min	10min	15min	30min	1h	3h	5h	10h	20h
1.60V	458	364	277	175	108	45.2	27.6	15.5	7.87
1.65V	435	348	264	172	104	43.7	26.8	15.3	7.81
1.70V	409	328	250	169	100	42.3	26.0	15.2	7.75
1.75V	383	309	237	166	95.9	40.5	25.3	15.0	7.69
1.80V	358	293	223	162	92.0	38.6	24.5	15.0	7.63

Constant power discharge ratings-watts at 25°C

End Point Volts/Cell	5min	10min	15min	30min	1h	3h	5h	10h	20h
1.60V	820	655	502	319	197	83.2	51.0	28.7	14.7
1.65V	774	623	475	312	189	80.0	49.3	28.3	14.5
1.70V	724	584	448	304	181	77.0	47.6	27.9	14.3
1.75V	675	547	421	296	173	73.2	46.0	27.5	14.2
1.80V	626	515	395	289	165	69.5	44.4	27.3	14.0

