

DC1500V FUSE AND FUSE BASE SPECIFICATION

1. Application

This series of fuse is suitable for solar photovoltaic power generation system, rated voltage to 1500V, rated current to 500A, connected with photovoltaic panels and batteries, to charge variable flow system for short circuit breaking protection in photovoltaic station and photovoltaic power generation system. the rated breaking capacity is 30KA, products confirm to IEC60269.6

2. Normal Working Conditions

Ambient Temperature: -40°C - + 90°C

Equipment installation height: less than 2000m

(if you want use exceeding this height, pls tell us in advance, we can design according to your requirements)

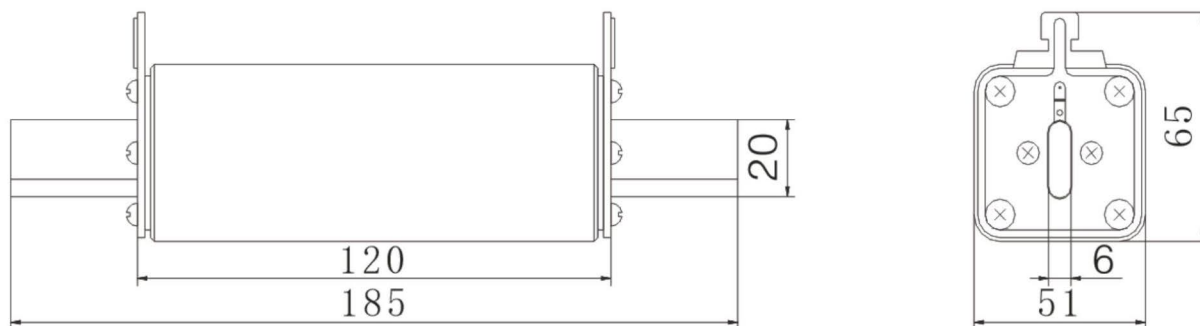
3. Use Category

gPV means all range DC Fuse used for breaking protection in solar photovoltaic power generation system.

4. Structure

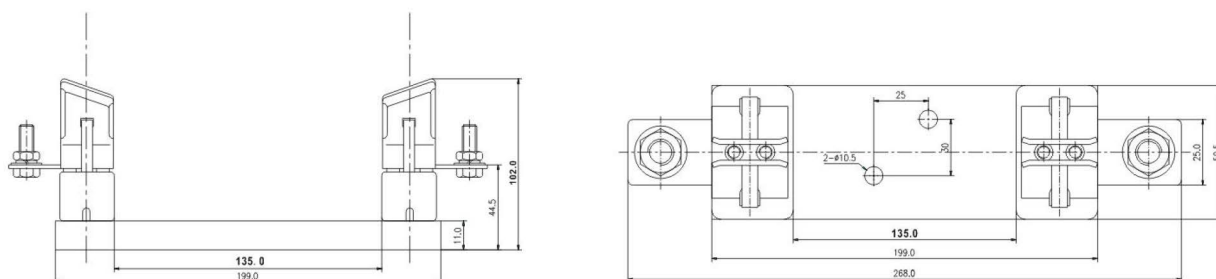
Fuse Link is made of pure silver, welding low tin and encapsulated in the high-strength porcelain, the fuse tube filled with high pure quartz sand with chemically processed as an arc medium, fuse body is connected with contacting terminals by spot welding.

5. Main Technical Specification

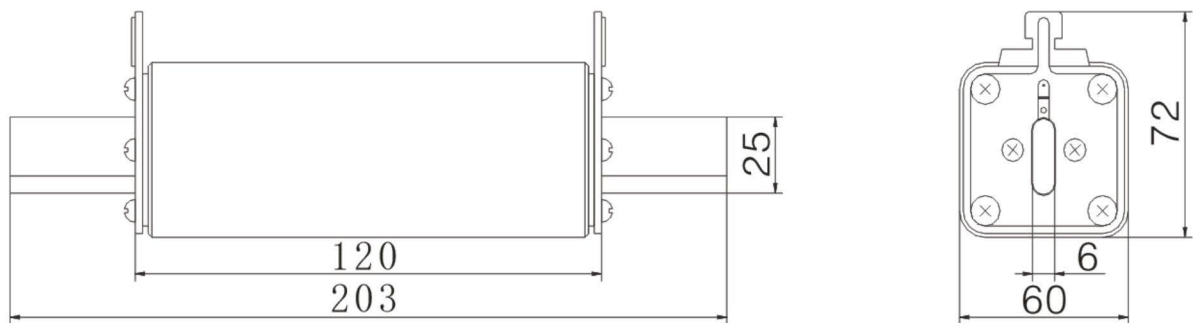


CFPV-H1XL

Model	Rated Voltage	Rated Current	Class of Operation	SIZE (mm)
CFPV-H1XL	DC 1500V	35A-200A	gPV	See Above Drawing
	Standard	Breaking Capacity	Time Constant	
	IEC60269	30kA	1-3ms	

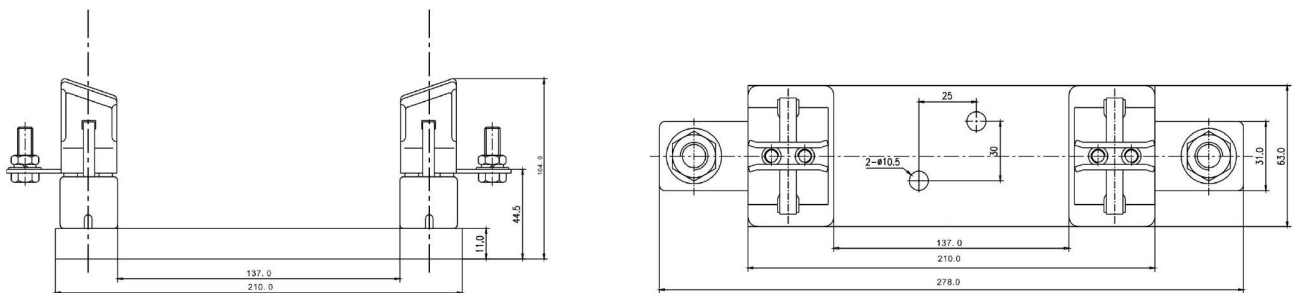


Model	Rated Voltage	Rated Current	Class of Operation	SIZE (mm)
CFPV-H1XLB	DC 1500V	250A	gPV	See Above Drawing
	Standard	Screw Size	Torque	
	IEC60269	M10	32Nm	

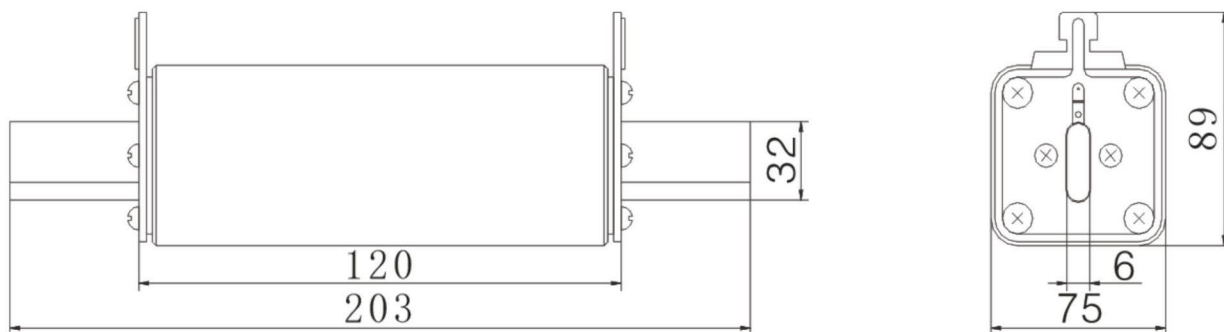


CFPV-H2XL

Model	Rated Voltage	Rated Current	Class of Operation	SIZE (mm)
CFPV-H2XL	DC 1500V	80A-400A	gPV	See Above Drawing
	Standard	Breaking Capacity	Time Constant	
	IEC60269	30kA	1-3ms	

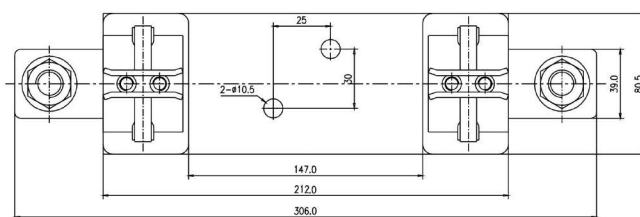
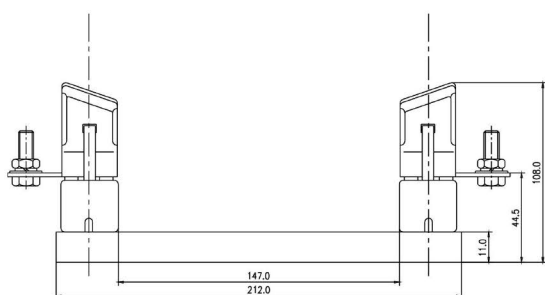


Model	Rated Voltage	Rated Current	Class of Operation	SIZE (mm)
CFPV-H2XLB	DC 1500V	450A	gPV	See Above Drawing
	Standard	Screw Size	Torque	
	IEC60269	M10	32Nm	



CFPV-H3L

Model	Rated Voltage	Rated Current	Class of Operation	SIZE (mm)
CFPV-H3L	DC 1500V	125A-500A	gPV	See Above Drawing
	Standard	Breaking Capacity	Time Constant	
	IEC60269	30kA	1-3ms	



Model	Rated Voltage	Rated Current	Class of Operation	SIZE (mm)
CFPV-H3LB	DC 1500V	630A	gPV	See Above Drawing
	Standard	Screw Size	Torque	
	IEC60269	M10	32Nm	

Item Name	Voltage (Vdc)	Current (A)	Test Time (h)	Power Dissipation @0.7In (w)	Power Dissipation @1.0In (w)	Breaking Capacity (kA)
CFPV-H1XL	1500	63	1	8	18	30
	1500	80	2	10	22	30
	1500	100	2	11	24	30
	1500	125	2	12	27	30
	1500	160	2	15	33	30
	1500	200	3	16	37	30
CFPV-H2XL	1500	250	3	23	53	30
	1500	315	3	26	60	30
	1500	350	3	27	62	30
	1500	355	3	28	65	30
	1500	400	3	30	70	30
CFPV-H3L	1500	500	4	32	73	30

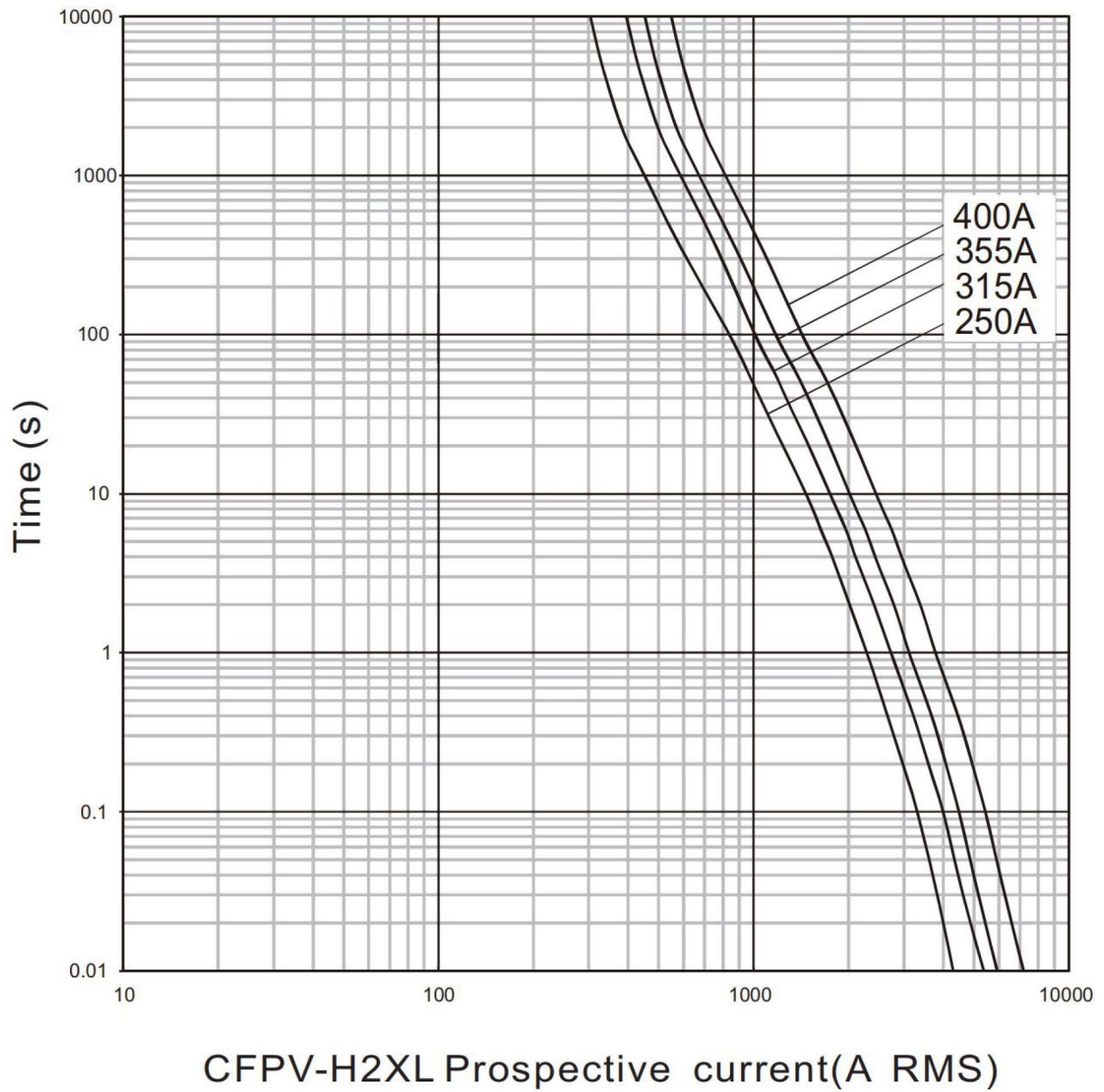
6. Testing Method:

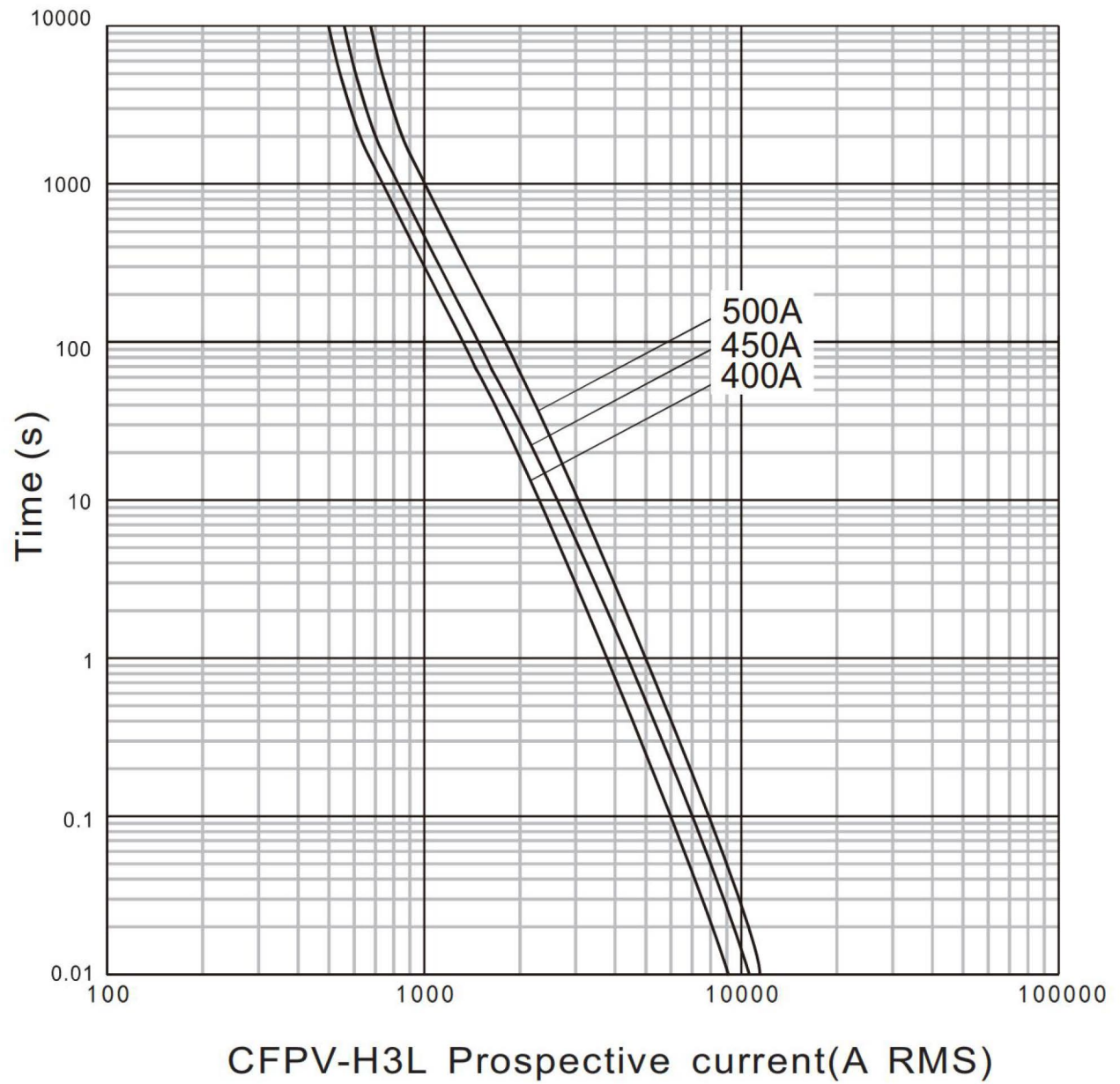
Appointed time and current

gPV The appointed time and current of Fuse

gPV Fuse current rated (A)	Appointed Time h	Appointed Current	
		Inf	If
$I_n \leq 63$	1	1.13In	1.45In
$63 < I_n \leq 160$	2		
$160 < I_n \leq 400$	3		
$I_n > 400$	4		

CFPV-H1XL Prospective current(A RMS)





7.2 Temperature Derating Curve

