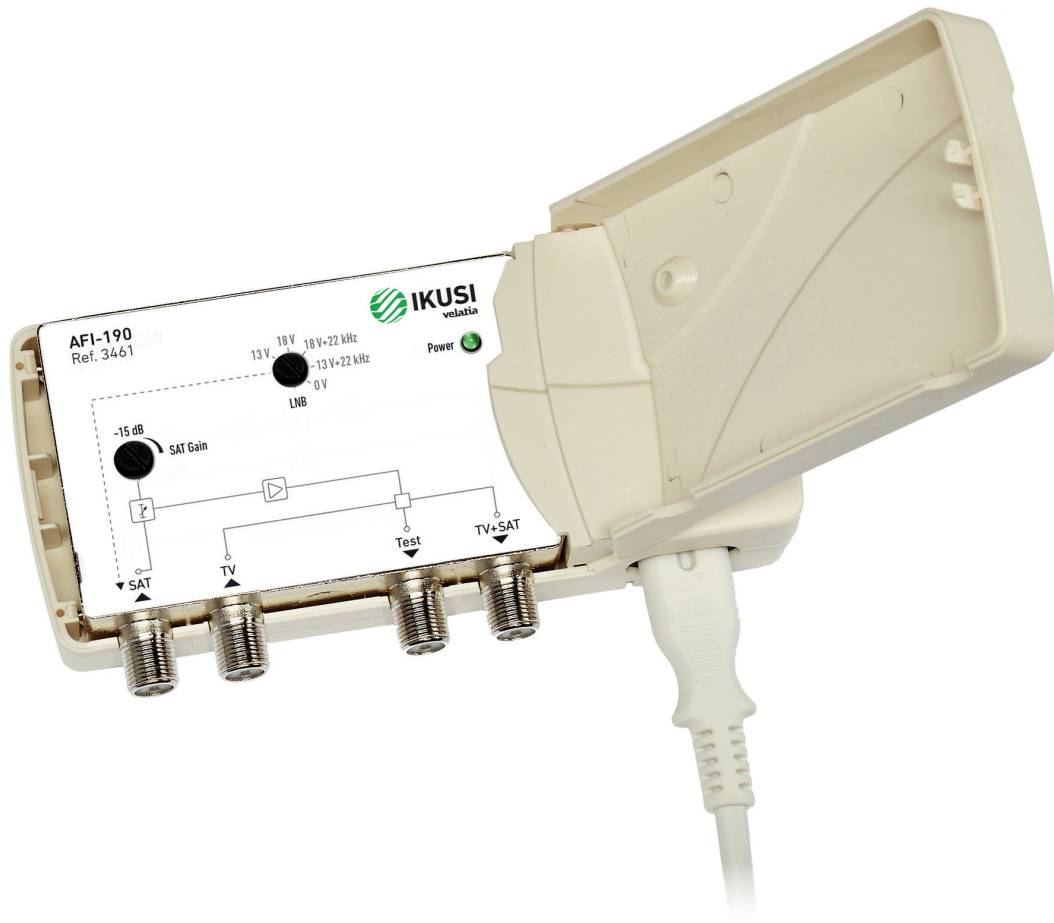




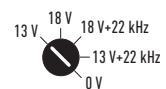
TV-SAT Combiner Unit to amplify a satellite polarity



Satellite 950-2450 MHz input port,
with adjustable gain



Terrestrial coupling
5-790 MHz input port



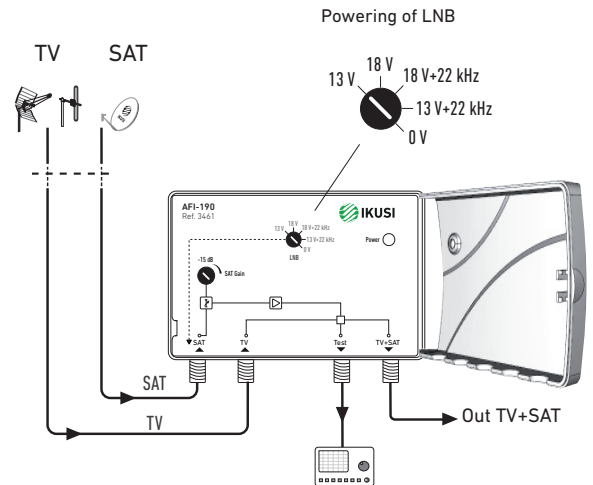
Adjustment of voltage/tone by
means of rotary commutator

Mains features

- 1 satellite 950-2450 MHz input port, with gain adjustment potentiometer;
- 1 terrestrial coupling 5-790 MHz input port;
- 1 satellite+Terrestrial output port;
- 1 output test port.
- Line powering of LNB. Voltage/tone injection for selection of polarity and band by rotary commutator.
- Universal alternating power supply. Electrical safety protection level Class II. Insertable power cord with bipolar plug.
- Plastic box with protective cover. F type connectors.
- Indoor mounting through an fixing hanger.

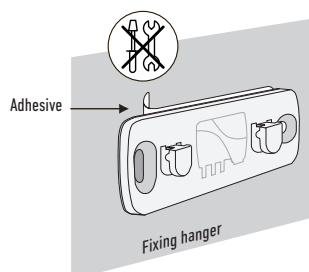
MODEL		AFI-190
REF.		3461
TV frequency band	MHz	5 - 790
SAT frequency Band	MHz	950 - 2450
Inputs (TV and SAT)		2
Salida (TV+SAT)		1
TV+SAT output test	dB	-30
TV Gain (passive)	dB	-1
SAT Gain	dB	> 34
SAT gain adjustment	dB	0 - 15
Output level (IMD3 -35 dB, EN 50083-3)	dBμV	120
Input/output return loss	dB	≥ 6
Noise figure	dB	< 8
Mains supply voltage	VAC	100 - 240
Regulation type		Switched mode
Insertable Voltage/Tone to SAT input port		0 V ; 13V+22 kHz ; 18V+22 kHz ; 18 V ; 13 V
Max LNB power current	mA	200 (+13 VDC / +18 VDC)
Consumption	W	< 6
Dimensions	mm	120 x 85 x 50

Installation example

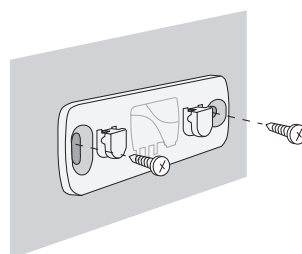


Easy to fix/release the amplifier to the wall

fix hanger on the wall



drill and screw (optional)



place amplifier

