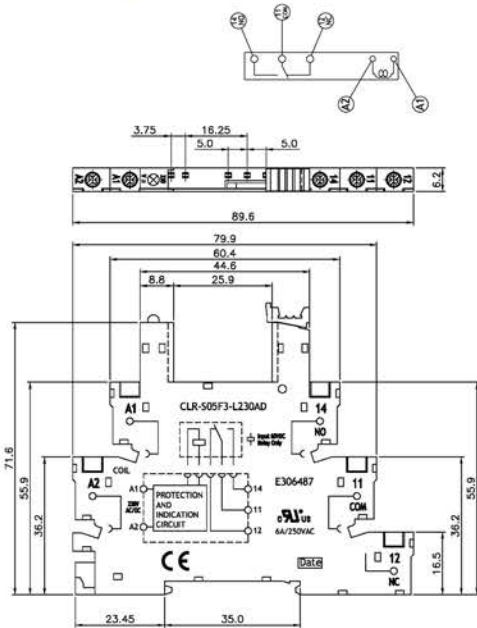
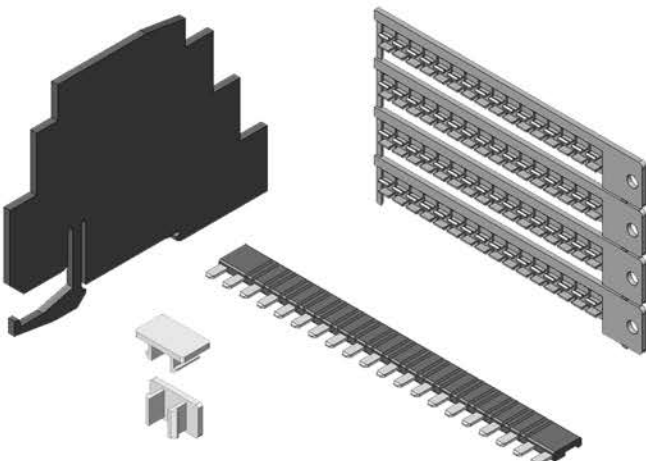


UL/CUL No: E306487

Dimensions



Accessories



Main Feature

- Module width 6.2mm.
- Reduced system width for increased packing density on the DIN rail.
- DC and AC version.
- Electrical indicator as standard (LED).
- Protection circuit.
- Jumper bars.
- Sockets and accessories: RoHS compliance (Directive 2002/95/EC).
- Socket with screw-type terminal for DIN-rail mounting.

Specifications

Rated current.....6A
 Rated voltage / max. Switching voltage AC.....250VAC
 Dielectric strength coil-contact circuit.....2,500V_{rms}
 Clearance / creepage coil-contact circuit.....≥ 6/8mm
 Material group of insulation parts.....≥ IIIa
Insulation to IEC 60664-1

Type of insulation coil-contact circuit.....reinforced
 Open contact circuit.....functional
 Rated insulation voltage.....250V
 Pollution degree.....2
 Rated voltage system.....230/400V
 Over voltage category.....III

RoHS Directive 2002/95/EC

Sockets, retainers and marking tag.....compliant
 Degree of protection DIN 40050.....IP20
 Ambient temperature range.....-25... +70 °C
 Terminals.....screw
 Terminal screw torque acc. IEC 61984.....0.5Nm
 Max.....0.6Nm

Wire cross section

Single wire.....0.2X2.5mm²
 Fine wire.....0.2X2.5mm²
 With bootlace crimp (DIN 46228/1).....0.2X2.5mm²
 Insertion cycles.....A (10)
 Max. Insertion Force total.....50cNm
 Mounting distance.....0, dense packing
 Weight.....26g
 Packaging unit.....20 pcs.

Order Information

CLR - S 05 F3 - L 24 D1

Voltage type	D1 (DCV type "+" on A1 terminal)
	D2 (DCV type "+" on A2 terminal)
A1, A2 input voltage	AD (AC/DCV type)
	12 (Use 12V)
	24 (Use 24V)
	115 (Use 115V)
Special remark	230 (Use 230V)
	L (Standard for LED module)
	V (Standard with varistor)
	C (Standard with capacity)
Insulation levels	Z (Standard with zener diode)
	X (V+C+Z)
	Y (C+Z)
Relay terminals	F3 (for three levels)
Contact form	S (for screw type)
Item	C (for cage clamp type)
	CLR