

PT26-12

12Volt 26Ah

Specifications

Nominal Voltage(V) 12V

Nominal Capacity

20 hour rate	(0.36A to 10.50V)	26Ah
10 hour rate	(0.684A to 10.50V)	23.85Ah
5 hour rate	(1.224A to 10.20V)	22.03Ah
1 C	(7.2A to 9.60V)	17.1Ah
3 C	(21.6A to 9.60V)	18.6Ah

Weight Approx. 8kg(17.64Lbs.)

Internal Resistance (at 1KHz) Approx. 16mΩ

Maximum Discharge Current for

5 seconds: 240A

Charging Methods at 25°C (77°F)

Cycle use:

Charging Voltage 14.4 to 15.0V

Coefficient -5.0mV/°C/cell

Maximum Charging Current : 7.8A

Standby use:

Float Charging Voltage 13.5 to 13.8V

Coefficient -3.0mV/°C/cell

Operating Temperature Range

Charge -15°C (5°F) to 40°C (104°F)

Discharge -15°C (5°F) to 50°C (122°F)

Storage -15°C (5°F) to 40°C (104°F)

Charge Retention (shelf life) at 20°C (68°F)

1 month 92%

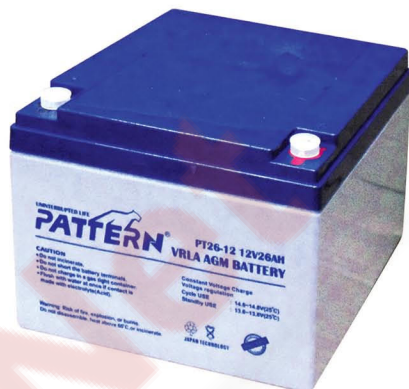
3 month 90%

6 month 80%

Case Material ABS UL94 HB

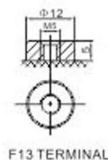
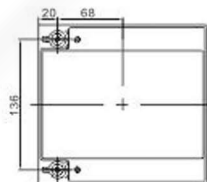
Option: Flammability resistance of (UL94 V-0)

Terminal F13

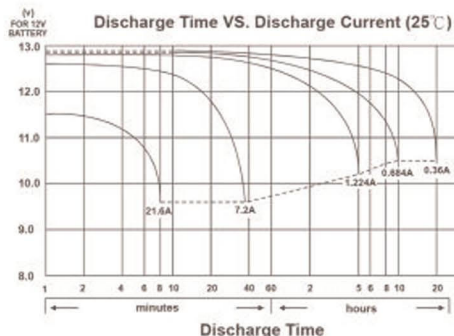
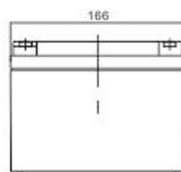
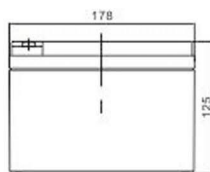


Dimensions

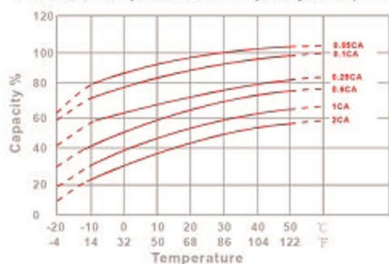
mm(inch)



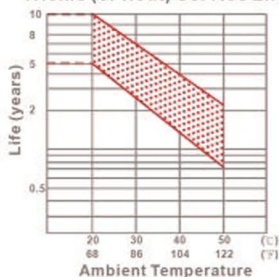
F13 TERMINAL



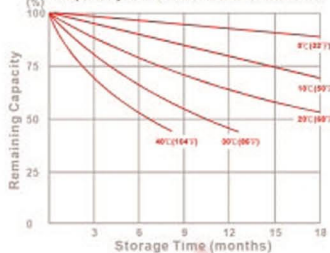
Effect of Temperature on Capacity 25°C (77°F)



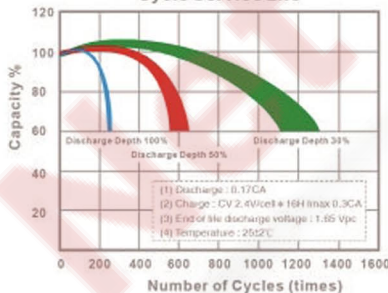
Trickle (or float) Service Life



Capacity Retention Characteristic



Cycle Service Life



Constant Current Discharge Characteristics : A (25°C)

F.V/Time	5MIN	10MIN	15MIN	30MIN	1HR	2HR	3HR	4HR	5HR	8HR	10HR	20HR
1.60V	90.40	58.96	43.49	25.17	14.54	9.032	6.566	5.229	4.414	2.949	2.402	1.250
1.65V	87.13	57.20	42.35	24.62	14.27	8.900	6.479	5.164	4.363	2.920	2.379	1.240
1.70V	82.88	54.89	40.85	23.89	13.92	8.724	6.363	5.077	4.295	2.880	2.349	1.226
1.75V	77.42	51.91	38.90	22.93	13.45	8.492	6.208	4.962	4.205	2.827	2.308	1.208
1.80V	70.54	48.10	36.40	21.69	12.84	8.186	6.005	4.811	4.085	2.757	2.255	1.185
1.85V	62.08	43.34	33.23	20.11	12.05	7.788	5.740	4.613	3.929	2.665	2.184	1.153

Constant Power Discharge Characteristics : WPC (25°C)

F.V/Time	5MIN	10MIN	15MIN	30MIN	1HR	2HR	3HR	4HR	5HR	8HR	10HR	20HR
1.60V	155.6	101.7	77.17	46.40	27.60	17.38	12.73	10.19	8.64	5.85	4.79	2.50
1.65V	154.0	101.3	76.73	46.06	27.38	17.25	12.64	10.12	8.58	5.81	4.76	2.48
1.70V	148.1	98.31	74.67	44.95	26.78	16.96	12.44	9.97	8.46	5.73	4.70	2.46
1.75V	140.8	94.64	72.13	43.59	26.01	16.58	12.19	9.78	8.31	5.64	4.62	2.42
1.80V	130.5	89.22	68.44	41.65	24.95	16.07	11.84	9.52	8.11	5.51	4.52	2.38
1.85V	116.9	81.81	63.37	38.99	23.58	15.37	11.37	9.16	7.82	5.34	4.39	2.32

(Note) The above characteristics data are average values obtained within three charge/discharge cycle not the minimum values.