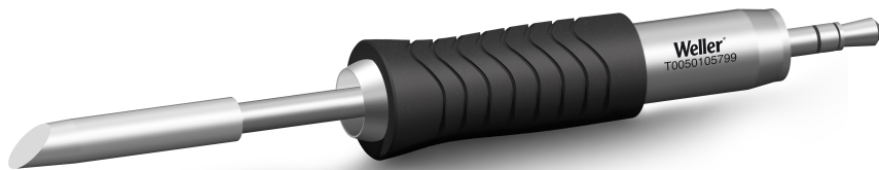


# RTU 050 B MS

Product no.: T0050105799



## Benefits

- › Patented Thermal Core Technology Optimized thermal heat transfer to the solder joint. Consistent soldering for reduced rework.
- › MIL-SPC / IPC standard Reduces risk of damage to sensitive components and workpieces. No rework, lower total cost of ownership
- › Active tip technology Fastest heat-up and recovery time, sensor close to the solder tip, excellent heat transfer. No downtime, continuing workflow, excellent results
- › Digital tool for data storage Motion activated usage sensor for energy control and data storage
- › Patented tip & grip design Only soldering tip on the market which can be changed without a tool. 20% faster change than leading competitors.

**Technical Data**

Tip shape	Bevel Cut
Tip type	MS
Width in mm	5
Width in inches	0.197
Thickness in mm	---
Thickness in inches	---
Length mm	30
Length inches	1.181
Power	150 W
Packaging unit	1