

Signal Towers

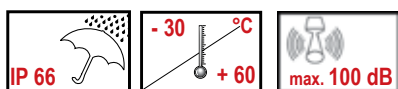
ECOmodul



Features

- ▶ Modular signal tower series in diameters Ø 70 mm, 60 mm and 40 mm for universal applications
- ▶ Modern signal tower concept based on up-to-date LED technique, alternative operation with conventional incandescent bulb technique
- ▶ Excellent cost/performance ratio
- ▶ Complete range of bright LED modules in function modes
 - LED steady light
 - LED flashing light
 - LED strobe light (single flash)
 - LED multi strobe light (multi flash)
- ▶ LED steady/LED strobe and LED multi strobe modules in version „HIGH PERFORMANCE“ (ECOmodul70 and ECOmodul60)
- ▶ Very long lifetime due to maintenance free LED technique, vibration proof and significantly reduced nominal current
- ▶ Piezo buzzer and multi tone siren modules
- ▶ Easy to operate connection technique
- ▶ Comprehensive range of mounting options including quick mount solutions
- ▶ Plc fit (leakage and inrush current)
- ▶ High ingress protection IP 66 certified to UL type 4/4X/13

Signal tower configurator - see pages 18-19.



ECOmodul **60**

ECOmodul **40**



Modular signal tower series ECOmodul70, ECOmodul60, ECOmodul40 for universal applications

- ▶ Easy, fast and individual mounting of tower
- ▶ Precise bayonet locking of modules
- ▶ Automatic electrical connection between modules
- ▶ Module configuration can be freely selected and modified



Modern signal tower concept based on up-to-date LED technique

- ▶ Comprehensive range of bright LED modules in function modes

	ECOmodul70	ECOmodul60	ECOmodul40
Number of LEDs	12	8	8
LED steady light	✓	✓	✓
LED flashing light	✓	✓	✓
LED strobe light (single flash)	✓	✓	✓
LED multi strobe light (multi flash)*	---	---	✓

*Mode of operation LED multi strobe light (multi flash):

- ▶ Combination of differently defined LED strobe sequences
 - ▶ LED flash sequence appears to viewer as irregular strobe pattern - no familiarization effect
 - ▶ Extremely high signalling effect for danger notification
-
- ▶ Modern LED strobe light and LED multi strobe light modules replace conventional lifetime limited xenon strobe modules with simultaneously obtaining
 - excellent efficiency
 - maximum vibration proofness
 - extremely long lifetime
(up to 100.000 h - corresponds to a continuous operation of > 10 years, thereafter LED emits approx. half of its original light output)



Comprehensive range of LED „HIGH PERFORMANCE“ modules

- ▶ The use of high performance LEDs in connection with intelligent electronics results in
 - highest signalling effects
 - suitability for outdoor applications/eg in sunlight
 - optimal signalling effects in extremely dangerous situations
- ▶ Extremely long lifetime (> 50.000 h)
- ▶ LED „HIGH PERFORMANCE“ modules available in function modes:

	ECOmodul70	ECOmodul60
Number of high performance LEDs	4	2
LED steady light	✓	✓
LED strobe light (single flash)	✓	---
LED multi strobe light (multi flash)	✓	✓



Steady light with high performance LEDs

Alternative operation with conventional incandescent bulb technique

- ▶ For all 3 tower sizes Ø 70 mm, 60 mm, 40 mm
- ▶ Troublefree, fingersafe bulb change
- ▶ Easy bulb change with inexpensive ancillary tool also in Ø 40 mm tower size



6 lens colours

- ▶ Clear visual status indication with up to 6 lens colours



Powerful piezo buzzer and multi tone siren modules

- ▶ Piezo buzzer modules for single tone operation (continuous or pulsing tone) in one signal tower (ECOmodul70, 60, 40)
- ▶ Piezo buzzer modules for dual tone operation (continuous and pulsing tone) in one signal tower (ECOmodul70)
- ▶ Multi tone siren modules - 1 of 8 different tones selectable (ECOmodul70)

Tone table XDM						
STAGE 1 S1	Tone type	Frequency Hz	Pictogram	Repeat rate	Specific application	Max dB
Tone 01	continuous	2700 Hz	—————			100
Tone 02	continuous	1350 Hz	—————			100
Tone 03	intermittent	2700 Hz	— — — — —	250 ms on, 250 ms off		100
Tone 04	intermittent	1350 Hz	— — — — —	250 ms on, 250 ms off		100
Tone 05	sweeping	1200 - 500 Hz	∩	1 Hz	evacuation Germany DIN 33404-3	98
Tone 06	sweeping	500 - 1200 Hz	∪	rising in 3 s, 0,5 s off	Netherlands NEN 2575:2000	98
Tone 07	alternating	800 - 1000 Hz	□	2 Hz		94
Tone 08	sweeping	500 - 1500 Hz	∩	10 Hz		94



XDE



XDZ



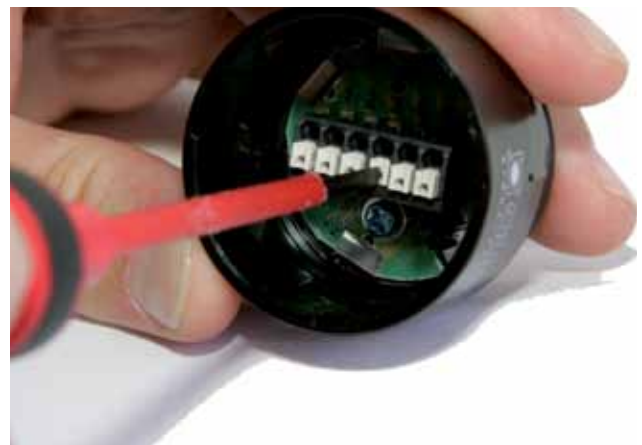
XDM

Comfortable connection technique

- ▶ Time and cost savings in electrical connection
- ▶ High contact safety and conductivity in vibrations and temperature fluctuations



Connection terminal with clamping yoke technique (ECOmodul70 and ECOmodul60)



Connection terminal with push-in technique (ECOmodul40)

Mounting options

Comprehensive offering of mounting option

- ▶ For practically all requirements in the industry, building technique etc.
- ▶ Flexible combination possibilities for materializing individual configurations

Base for horizontal mounting

1) with inside mounting holes

ECOmodul70	XMW
ECOmodul60	YMW
ECOmodul40	ZMW



2) with premounted fixation screws

ECOmodul70	XMS
ECOmodul60	YMS
ECOmodul40	ZMS



3) with external mounting lugs

ECOmodul70	XMF
ECOmodul60	YMF
ECOmodul40	ZMF



Base for vertical mounting

1) Single side mounting

ECOmodul70	XMV
ECOmodul60	YMV
ECOmodul40	ZMV



2) Double side mounting

ECOmodul70	XZV
ECOmodul60	YZV
ECOmodul40	ZZV



Mounting options

Pole mounting options

1) Pole mount base on aluminium tube with plastic foot
Tube lengths 100 mm, 250 mm and 400 mm

ECOmodul70	XMR
ECOmodul60	YMR
ECOmodul40	ZMR



Accessory:

Bracket (plastic) for vertical mounting

ECOmodul70	XWR
ECOmodul60	XWR
ECOmodul40	XWR

2) Pole mount base on aluminium tube for direct mounting with screw
Tube lengths 100 mm, 250 mm and 400 mm

ECOmodul70	XSW
ECOmodul60	YSW
ECOmodul40	ZSW



Accessory:

Set for vertical mounting

(metal bracket, adapter with cable gland)

ECOmodul70	XSS
ECOmodul60	XSS
ECOmodul40	XSS

3) Quick mount base „Foot Adapter“

Tube lengths 100 mm or 250 mm

ECModul70	XFR
ECModul60	YFR
ECModul40	ZFR

Function

- ▶ The quick mount base is electrically pre-wired; the lower adapter part is mounted on the device and electrically connected
- ▶ The signal tower with quick mount upper base part is simply inserted into the lower part and firmly mounted by twisting the fixing ring
- ▶ The signal tower is now fully functional

Advantages

- ▶ Simple and cost effective disassembly of signal tower for transportation of device
- ▶ Easy re-installation of signal tower at client's location
- ▶ Immediate function, no electrical connection work
- ▶ No wrong installation of signal tower possible as it only fits in one correct position into the quick mount lower part
- ▶ Additional locking option of signal tower with safety screw
- ▶ Quick mount base includes a rubber shipping cover protecting the exposed lower part during transportation or storage



Base extension

The base extension is an economic way of extending the length of an ECModul signal tower by 100 mm per base extension and to optically adapt the base to the diameter of the modules.

Suitable for all bases. The ECModul70, ECModul60 and ECModul40 signal tower system is basically designed to accept maximum 4 pieces base extension „XEP“, „YEP“ resp. „ZEP“ (corresponds to a length/extension of 400 mm). Depending on the individual application (vibration etc.) also a higher pole length can be achieved.



Accessory

Indication board

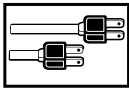
- ▶ Suitable for all ECModul signal towers
- ▶ Can be set up for one to five-tier signal towers (clean break-off at desired length due to pre-lasered break-off edges)
- ▶ Easy mounting on the pole mount base
- ▶ For attaching of individual instructions and indications
- ▶ Complete scope of supply with 5-tier board, mounting clamp and screws
- ▶ Suitable for all pole mount bases of ECModul signal towers

Dimensions of indication board: 150 x 398 mm

Available area per tier: 150 x 62 mm (4 x), 150 x 150 mm (1 x)

Order number: XIB 900 850 900





Technical data

Signal Towers ECOmodul70

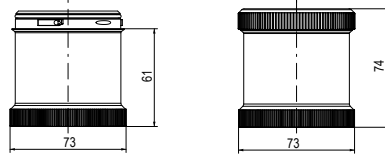
Housing material	Polycarbonate, black	Terminal	up to 2,5 mm ² / 14 AWG
Lens material	Polycarbonate	Temperature range	-30 °C to +60 °C
Lens colours	amber, red, clear, blue, green, yellow	Protection class	IP 66 / UL type 4/4X/13
		Number of optional modules	up to 5
		(with double bracket)	up to 10

Light modules	XDC	XDA	XDF	XLL	XDC-HP	XDF-HP	XFF-HP	
Light type	steady light	flashing light	strobe light	steady light	steady light	strobe light	multi strobe light	
Light source	LED			7 W bulb	high performance LED			
Socket	---			BA 15 d	---			
Flashing/strobe frequency	---	2 Hz	1,4 Hz	---	---	1,4 Hz	1-2,6 Hz	
Light emission	360°							
Leakage	> 0,003 A							
Nominal current	24 V AC/DC	0,049-0,054 A	0,058 A	0,130-0,135A	7 W	0,170-0,200 A	0,260-0,265 A	0,260-0,265 A
	110/120 V AC	0,028-0,031 A	0,028-0,030 A	0,010 A	7 W	---	---	---
	230/240 V AC	0,027-0,028 A	0,030-0,031 A	0,010 A	7 W	---	---	---
Lifetime	> 100.000 h				> 50.000 h			
Protection class	IP 66 / UL 4/4x/13							
Weight	80 g	80 g	80 g	72 g	87 g	87 g	87 g	

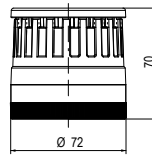
Tone modules	XDE	XDZ	XDM
Tone type	continuous or pulsing tone	continuous or pulsing tone	continuous or pulsing tone
Tone frequency	ca. 2.800 Hz		500-2.700 Hz
Tone selection	DIP, 1-pole	externally switchable	DIP, 3-pole
Sound pressure	100 dB	100 dB	100 dB
Sound pressure selection	Potentiometer	Potentiometer	Potentiometer
Sound emission	360°		
Leakage	> 0,003 A		
Nominal current	24 V AC/DC	0,092 A	0,115 A
	110/120 V AC	0,041 A	0,045 A
	230/240 V AC	0,043 A	0,043 A
Protection class	IP 66 / UL 4/4X/13		
Weight	102 g	102 g	102 g

Drawings

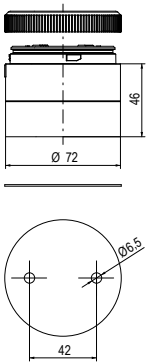
XLL, XDC, XDA, XDF, XFF



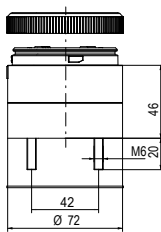
XDE, XDZ, XDM



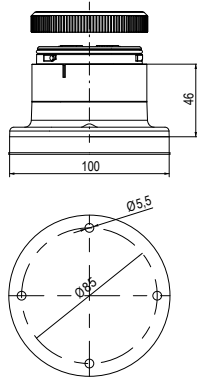
XMW



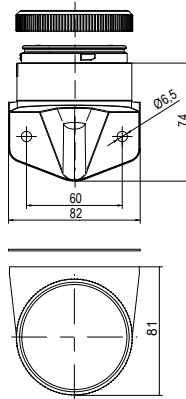
XMS



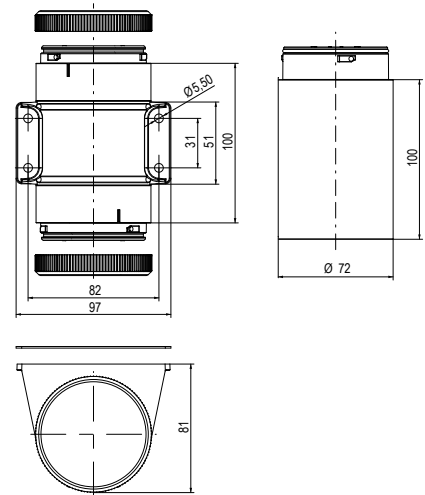
XMV



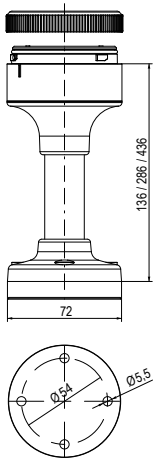
XZV



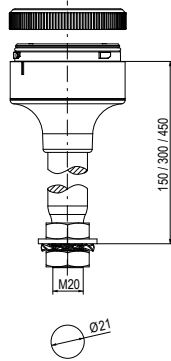
XEP



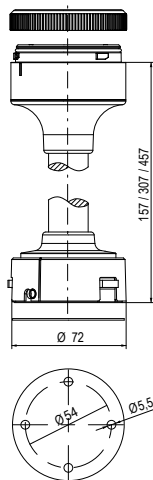
XMR



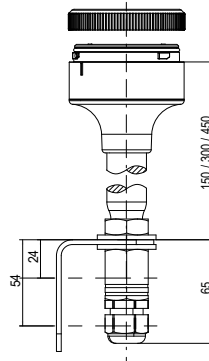
XSW



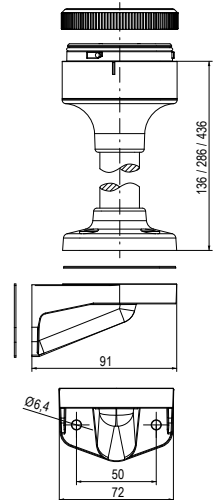
XFR



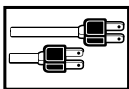
XSW+XSS



XMR+XWR



* Tone table XDM see page 7



Technical data

Signal Towers ECOmodul60

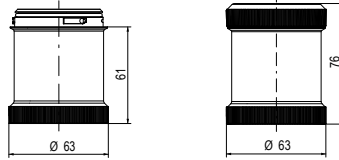
Housing material	Polycarbonate, black	Terminal	up to 2,5 mm ² / 14 AWG
Lens material	Polycarbonate	Temperature range	-30 °C to +60 °C
Lens colour	amber, red, clear, blue, green, yellow	Protection class	IP 66 / UL type 4/4X/13
		Number of optional modules	up to 5
		(with double bracket)	up to 10

Light modules	YDC	YDA	YDF	YFF-HP	YDC-HP	YLL	
Light type	steady light	flashing light	strobe light	multi strobe light	steady light	steady light	
Light source	LED			high performance LED		4 W bulb	
Socket	---					BA 15 d	
Flashing/strobe frequency	---	2 Hz	1,4 Hz	1-2,6 Hz	---	---	
Light emission	360°						
Leakage	> 0,003 A						
Nominal current	24 V AC/DC	0,022-0,033 A	0,028-0,036 A	0,035-0,065 A	0,190-0,250 A	0,130-0,250 A	4 W
	110/120 V AC	0,029-0,030 A	0,030 A	0,010 A	---	---	4 W
	230/240 V AC	0,029-0,030 A	0,030 A	0,010 A	---	---	4 W
Lifetime	> 100.000 h	> 100.000 h	> 100.000 h	> 50.000 h	> 50.000 h	---	
Protection class	IP 66 / UL type 4/4X/13						
Weight	67 g	67 g	67 g	72 g	72 g	63 g	

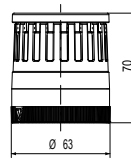
Tone modules	YDE	
Tone type	continuous or pulsing tone	
Tone frequency	ca. 2.500 Hz	
Tone selection	DIP 1-pole	
Sound pressure	90 dB	
Sound pressure selection	Potentiometer	
Sound emission	360°	
Leakage	> 0,003 A	
Nominal current	24 V AC/DC	0,065 A
	110/120 V AC	0,031 A
	230/240 V AC	0,032 A
Protection class	IP 66 / UL type 4/4x/13	
Weight	83 g	

Drawings

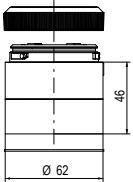
YLL, YDC, YDA, YDF, YFF



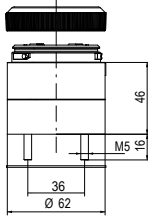
YDE



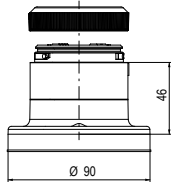
YMW



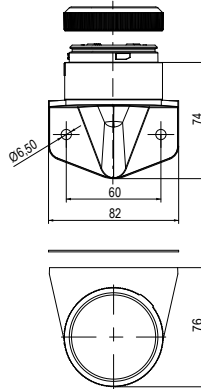
YMS



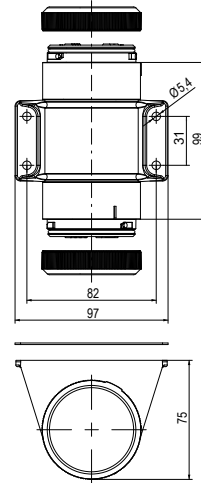
YMF



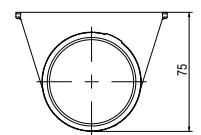
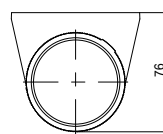
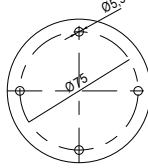
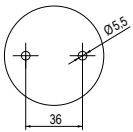
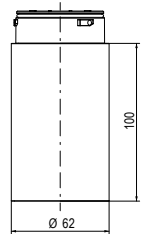
YMV



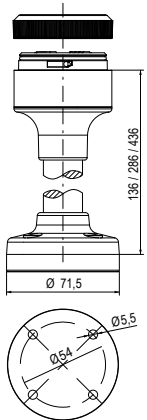
YZV



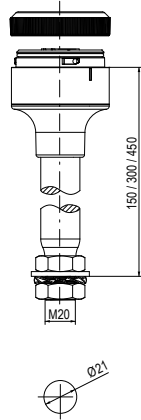
YEP



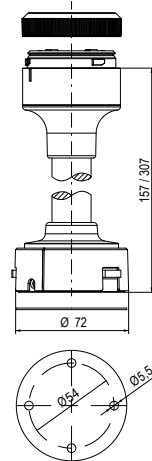
YMR



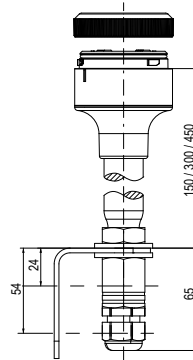
YSW



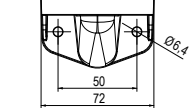
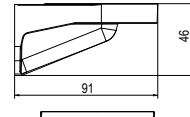
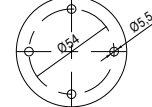
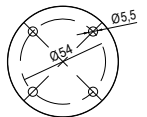
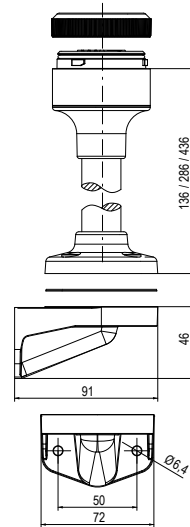
YFR

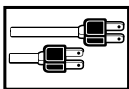


YSW+XSS



YMR+XWR





Technical data

Signal Towers ECOmodul40

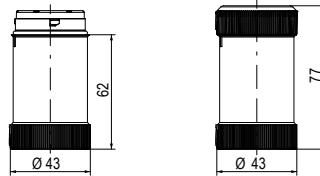
Housing material	Polycarbonate, black	Terminal	up to 1,5 mm ² / 16 AWG
Lens material	Polycarbonate	Temperature range	-30 °C to +60 °C
Lens colour	amber, red, clear, blue, green, yellow	Protection class	IP 66 / UL type 4/4X/13
		Number of optional modules	up to 5
		(with double bracket)	up to 10

Light modules	ZDC	ZDA	ZDF	ZFF	ZLL	
Light type	steady light	flashing light	strobe light	multi strobe light	steady light	
Light source	LED				4 W bulb	
Socket	---				BA 15 d	
Flashing/strobe frequency	---	2 Hz	1,4 Hz	1-2,6 Hz	---	
Light emission	360°					
Leakage	> 0,003 A					
Nominal current	24 V AC/DC	0,022-0,033 A	0,028-0,036 A	0,035-0,065 A	0,048-0,068 A	4 W
	110/120 V AC	0,030 A	0,030 A	0,010 A	0,021-0,030 A	4 W
	230/240 V AC	0,030 A	0,030 A	0,010 A	0,021-0,030 A	4 W
Lifetime	> 100.000 h	> 100.000 h	> 100.000 h	> 100.000 h	---	
Protection class	IP 66 / UL 4/4x/13					
Weight	45 g	45 g	45 g	46 g	40 g	

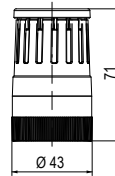
Tone module	ZDE	
Tone type	continuous or pulsing tone	
Tone frequency	ca. 4.000 Hz	
Tone selection	DIP 1-pole	
Sound pressure	80 dB	
Sound pressure selection	DIP switch	
Sound emission	360°	
Leakage	> 0,003 A	
Nominal current	24 V AC/DC	0,039 A
	110/120 V AC	0,021 A
	230/240 V AC	0,021 A
Protection class	IP 66 / UL 4/4X/13	
Weight	43 g	

Drawings

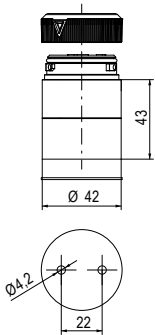
ZLL, ZDC, ZDA, ZDF, ZFF



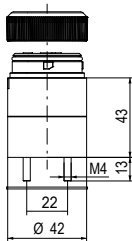
ZDE



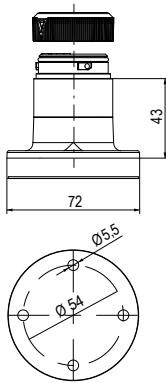
ZMW



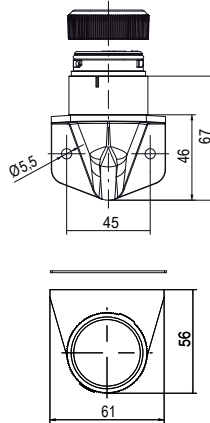
ZMS



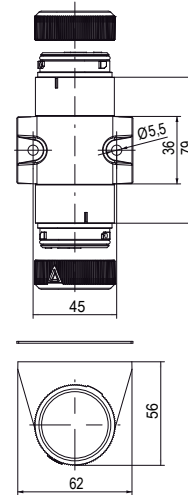
ZMF



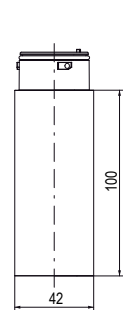
ZMV



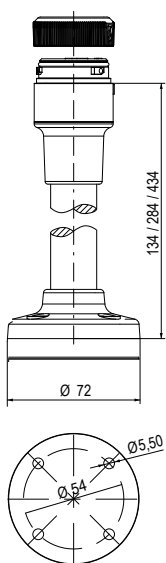
ZZV



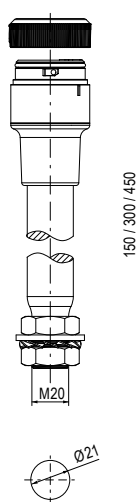
ZEP



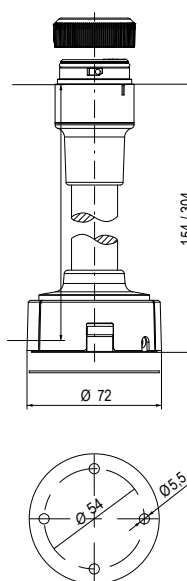
ZMR



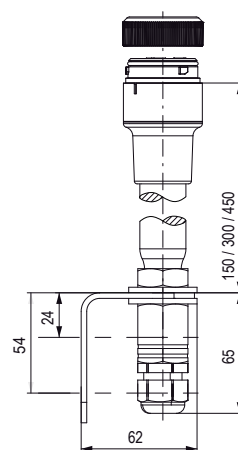
ZSW



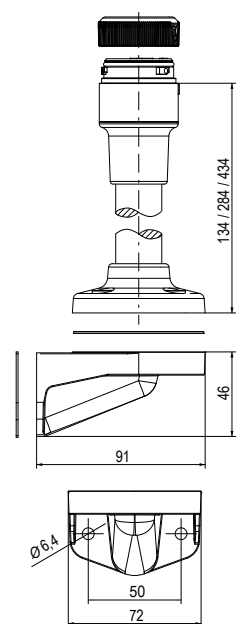
ZFR



ZSW+XSS



ZMR+XWR



Configurator



MODULES
TONE
Piezo Buzzer - 1 Tone
Piezo Buzzer - 2 Tones
Multi tone sounder - 8 Tones

LIGHT
Steady light
LED steady light
LED flashing light
LED strobe light
LED multi strobe light
LED steady light „HIGH PERFORMANCE“
LED strobe light „HIGH PERFORMANCE“
LED multi strobe light „HIGH PERFORMANCE“

BASE for
ECOmodul70
ECOmodul60
ECOmodul40
ECOmodul70
ECOmodul60
ECOmodul40
ECOmodul70
ECOmodul60
ECOmodul40



horizontal mounting	
with inside mounting holes	
XMW	900 570 900
YMW	901 570 900
ZMW	902 570 900



vertical mounting	
single side mounting	
XMV	900 573 900
YMV	901 573 900
ZMV	902 573 900



with premounted fixation screws	
XMS	900 571 900
YMS	901 571 900
ZMS	902 571 900



double side mounting	
XZV	900 574 900
YZV	901 574 900
ZZV	902 574 900

with external mounting lugs	
XMF	900 572 900
YMF	901 572 900
ZMF	902 572 900

Colour code for lens

C

1	amber	5	blue
2	red	6	green
4	clear	7	yellow

Length code for tubes

L

2	100 mm
3	250 mm
4	400 mm

ECOmodul 70

ECOmodul 60

ECOmodul 40

Specification	Type	Order No.
Continuous or pulsing tone	XDE	900 500 VOL
Continuous and pulsing tone	XDZ	900 510 VOL
8 tone types selectable	XDM	900 520 VOL

Type	Order No.
YDE	901 500 VOL


Type	Order No.
ZDE	902 500 VOL

Light source	Type	Order No.
Bulb	XLL	900 00C 900
Integrated LED	XDC	900 01C VOL
	XDA	900 02C VOL
	XDF	900 03C VOL
Integrated „HIGH PERFORMANCE“ LED	XDC-HP	900 05C VOL
	XDF-HP	900 06C VOL
	XFF-HP	900 07C VOL


Type	Order No.
YLL	901 00C 900
YDC	901 01C VOL
YDA	901 02C VOL
YDF	901 03C VOL
YDC-HP	901 05C VOL
YFF-HP	901 07C VOL

Type	Order No.
ZLL	902 00C 900
ZDC	902 01C VOL
ZDA	902 02C VOL
ZDF	902 03C VOL
ZFF	902 04C VOL


Voltage Code		VOL
405	24 V AC/DC	VOL
310	110/120 V AC	
313	230/240 V AC	




Pole mounting options	
Aluminium tube with plastic foot	
XMR	900 58L 900
YMR	901 58L 900
ZMR	902 58L 900




Accessories for pole mounting	
Bracket (fits XMR, YMR, ZMR)	
XWR	900 600 900




For horizontal mounting with screw	
XSW	900 59L 900
YSW	901 59L 900
ZSW	902 59L 900




Set for vertical mounting (for XSW, YSW, ZSW)	
XSS	900 700 900



Quick mount base „Foot Adapter“	
XFR	900 56L 900
YFR	901 56L 900
ZFR	902 56L 900



Base extension (fits all bases)	
XEP	900 800 900
YEP	901 800 900
ZEP	902 800 900



Indication board (fits XMR, YMR, ZMR)	
XIB	900 850 900



Order data



Type	Light modules	Light source	Nominal voltage (V)	Voltage range (V)	Nominal current (A)	Order No. Housing black	
XLL	Steady light	bulb	up to 250 V AC/DC		7 W	900 00C 900	
XDC	LED steady light		24 V AC/DC	+/- 10%	0,049-0,054	900 01C 405	
			110/120 V AC		0,028-0,031	900 01C 310	
			230/240 V AC		0,027-0,028	900 01C 313	
XDA	LED flashing light	integrated LED	24 V AC/DC	+/- 10%	0,058	900 02C 405	
			110/120 V AC		0,028-0,030	900 02C 310	
			230/240 V AC		0,030-0,031	900 02C 313	
XDF	LED strobe light		24 V AC/DC	+/- 10%	0,130-0,135	900 03C 405	
			110/120 V AC		0,010	900 03C 310	
			230/240 V AC		0,010	900 03C 313	
„HIGH PERFORMANCE“ models							
XDC-HP	LED steady light „HIGH PERFORMANCE“	integrated „HIGH PERFORMANCE“ LED	24 V AC/DC	18-30 V DC 18-26 V AC	0,170-0,200	900 05C 405	
XDF-HP	LED flashing light „HIGH PERFORMANCE“		24 V AC/DC		0,260-0,265	900 06C 405	
XFF-HP	LED multi strobe light „HIGH PERFORMANCE“		24 V AC/DC		0,260-0,265	900 07C 405	
Type	Tone modules	Tone options		Nominal voltage (V)	Voltage range (V)	Nominal current (A)	Order No. Housing black
		Tone type	Volume				
XDE	Piezo buzzer	continuous or pulsing	100 dB	24 V AC/DC	+/- 10%	0,092	900 500 405
				110/120 V AC		0,041	900 500 310
				230/240 V AC		0,043	900 500 313
XDZ	Piezo buzzer 2 tones selectable	continuous and pulsing	100 dB	24 V AC/DC	+/- 10%	0,092	900 510 405
				110/120 V AC		0,041	900 510 310
				230/240 V AC		0,043	900 510 313
XDM	Multi tone siren Tones see tone table page 7	8 tones	100 dB	24 V AC/DC	+/- 10%	0,115	900 520 405
				110/120 V AC		0,045	900 520 310
				230/240 V AC		0,043	900 520 313
Type	Bases					Order No. Housing black	
XMW	Base for horizontal mounting		with inside mounting holes			900 570 900	
XMS	Base for horizontal mounting		with premounted fixation screws			900 571 900	
XMV	Base for horizontal mounting		with external mounting lugs			900 572 900	
XMV	Base for vertical mounting		single side mounting			900 573 900	
XZV	Base for vertical mounting		double side mounting			900 574 900	
XMR	Pole mount base		on aluminium tube with plastic foot			900 58L 900	
XWR	Bracket		for pole mount base with plastic foot (XMR)			900 600 900	
XSW	Pole mount base		on aluminium tube for direct mounting with screw			900 59L 900	
XSS	Set for vertical mounting (for XSW)		metal bracket, adapter with cable gland			900 700 900	
XFR	Quick mount base		on aluminium tube with „foot adapter“			900 56L 900	
XEP	Base extension, length 100 mm		suitable for all bases			900 800 900	

Accessories

Type	Denomination	Nominal voltage (V)	Ordner No.
XIB	Indication board		900 850 900
LWW	Bulb changing tool (use optional)		890 900 900
GL01	Incandescent bulb BA 15d	12 V, 5 W	890 010 904
GL02	Incandescent bulb BA 15d	24 V, 6,5 W	890 010 905
GL05	Incandescent bulb BA 15d	110/120 V, 7 W	890 010 910
GL06	Incandescent bulb BA 15d	230/240 V, 6 W	890 010 913



Order data

Type	Light modules	Light source	Nominal voltage (V)	Voltage range (V)	Nominal current (A)	Order No. Housing black	
YLL	Steady light	bulb	up to 250 V AC/DC		4 W	901 00C 900	
YDC	LED steady light	integrated LED	24 V AC/DC	+/- 10%	0,022-0,033	901 01C 405	
			110/120 V AC		0,029-0,030	901 01C 310	
			230/240 V AC		0,029-0,030	901 01C 313	
YDA	LED flashing light		24 V AC/DC	+/- 10%	0,028-0,036	901 02C 405	
			110/120 V AC		0,030	901 02C 310	
			230/240 V AC		0,030	901 02C 313	
YDF	LED strobe light	24 V AC/DC	+/- 10%	0,035-0,065	901 03C 405		
		110/120 V AC		0,010	901 03C 310		
		230/240 V AC		0,010	901 03C 313		
„HIGH PERFORMANCE“ models							
YDC-HP	LED steady light „HIGH PERFORMANCE“	integrated „HIGH PERFORMANCE“ LED	24 V AC/DC	18-30 V DC 18-26 V AC	0,130-0,150	901 05C 405	
YFF-HP	LED multi strobe light „HIGH PERFORMANCE“		24 V AC/DC		0,190-0,250	901 07C 405	
Type	Tone modules	Tone options		Nominal voltage (V)	Voltage range (V)	Nominal current (A)	Order No. Housing black
		Tone type	Volume				
YDE	Piezo Buzzer	continuous or pulsing	90 dB	24 V AC/DC	+/- 10%	0,065	901 500 405
				110/120 V AC		0,031	901 500 310
				230/240 V AC		0,032	901 500 313
Type	Bases					Order No. Housing black	
YMW	Base for horizontal mounting		with inside mounting holes			901 570 900	
YMS	Base for horizontal mounting		with premounted fixation screws			901 571 900	
YMF	Base for horizontal mounting		with external mounting lugs			901 572 900	
YMV	Base for vertical mounting		single side mounting			901 573 900	
YZV	Base for vertical mounting		double side mounting			901 574 900	
YMR	Pole mount base		on aluminium tube with plastic foot			901 58L 900	
XWR	Bracket		for pole mount base with plastic foot (YMR)			900 600 900	
YSW	Pole mount base		on aluminium tube for direct mounting with screw			901 59L 900	
XSS	Set for vertical mounting (for YSW)		metal bracket, adapter with cable gland			900 700 900	
YFR	Quick mount base		on aluminium tube with „foot adapter“			901 56L 900	
YEP	Base extension, length 100 mm		suitable for all bases			901 800 900	

Accessories

Type	Denomination	Nominal voltage	Order No.
XIB	Indication board		900 850 900
LWW	Bulb changing tool (use optional)		890 900 900
GL11	Incandescent bulb BA 15d	12 V, 4 W	890 012 904
GL12	Incandescent bulb BA 15d	24 V, 4 W	890 012 905
GL15	Incandescent bulb BA 15d	110/120 V, 4 W	890 012 910
GL16	Incandescent bulb BA 15d	230/240 V, 4 W	890 012 913

Colour code for lens

C

1	amber	5	blue
2	red	6	green
4	clear	7	yellow

Length code for tubes

L

2	100 mm
3	250 mm
4	400 mm



Order data



Type	Light modules	Light source	Nominal voltage (V)	Voltage range (V)	Nominal current (A)	Order No. Housing black	
ZLL	Steady light	bulb	up to 250 V AC/DC		4 W	902 00C 900	
ZDC	LED steady light	integrated LED	24 V AC/DC	+/- 10%	0,022-0,033	902 01C 405	
			110/120 V AC		0,030	902 01C 310	
			230/240 V AC		0,030	902 01C 313	
ZDA	LED flashing light		24 V AC/DC	+/- 10%	0,028-0,036	902 02C 405	
			110/120 V AC		0,030	902 02C 310	
			230/240 V AC		0,030	902 02C 313	
ZDF	LED strobe light		24 V AC/DC	+/- 10%	0,035-0,065	902 03C 405	
			110/120 V AC		0,010	902 03C 310	
ZFF	LED multi strobe light		230/240 V AC	+/- 10%	0,010	902 03C 313	
		24 V AC/DC	0,048-0,068		902 04C 405		
		110/120 V AC	0,021-0,030		902 04C 310		
			230/240 V AC		0,021-0,030	902 04C 313	
Type	Tone modules	Tone options		Nominal voltage (V)	Voltage range (V)	Nominal current (A)	Order No. Housing black
		Tone type	Volume				
ZDE	Piezo buzzer	continuous or pulsing	80 dB	24 V AC/DC	+/- 10%	0,039	902 500 405
				110/120 V AC		0,021	902 500 310
				230/240 V AC		0,021	902 500 313
Type	Bases					Order No. Housing black	
ZMW	Base for horizontal mounting		with inside mounting holes			902 570 900	
ZMS	Base for horizontal mounting		with premounted fixation screws			902 571 900	
ZMF	Base for horizontal mounting		with external mounting lugs			902 572 900	
ZMV	Base for vertical mounting		single side mounting			902 573 900	
ZZV	Base for vertical mounting		double side mounting			902 574 900	
ZMR	Pole mount base		on aluminium tube with plastic foot			902 58L 900	
XWR	Bracket		for pole mount base with plastic foot (ZMR)			900 600 900	
ZSW	Pole mount base		on aluminium tube for direct mounting with screw			902 59L 900	
XSS	Set for vertical mounting (for ZSW)		metal bracket, adapter with cable gland			900 700 900	
ZFR	Quick mount base		on aluminium tube with „foot adapter“			902 56L 900	
ZEP	Base extension, length 100 mm		suitable for all bases			902 800 900	

Accessories

Type	Denomination	Nominal voltage (V)	Order No.
XIB	Indication board		900 850 900
LWW	Bulb changing tool		890 900 900
GL11	Incandescent bulb BA 15d	12 V, 4 W	890 012 904
GL12	Incandescent bulb BA 15d	24 V, 4 W	890 012 905
GL15	Incandescent bulb BA 15d	110/120 V, 4 W	890 012 910
GL16	Incandescent bulb BA 15d	230/240 V, 4 W	890 012 913

Colour code for lens

C

1	amber	5	blue
2	red	6	green
4	clear	7	yellow

Length code for tubes

L

2	100 mm
3	250 mm
4	400 mm

HEADQUARTERS

**J.AUER – FABRIK ELEKTRISCHER
MASCHINEN Ges.m.b.H.**

Perfektastraße 102
1230 Vienna / AUSTRIA
Tel. +43 (0)1 813 82 20
Fax +43 (0)1 815 99 51
office@auer-signal.com
www.auer-signal.com

SALES GERMANY

J.AUER – SIGNALGERÄTE GmbH

Sperberweg 11
41468 Neuss / GERMANY
Tel. +49 (0)2131 29 86 86-0
Fax +49 (0)2131 29 86 86-6
info@auer-signal.de
www.auer-signal.com