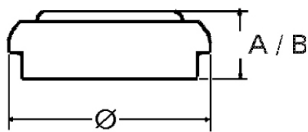


Data Sheet

Alkaline Manganese

V 625 U

Type Number..... 4626
Designation IEC..... LR 9
System..... Manganese Dioxide/
 Zinc/KOH-Electrolyte



Nominal Voltage..... 1,5V
Typical Capacity C..... 200 mAh
 Load 300 Ohm, at 20°C down to 0.9 V

Weight (approx.)..... 3,3 g
Volume..... 1,01 ccm
Coding..... Manufacturing Month/Year
 by Letter Code

Temperature Ranges min max.
 Storage..... -10°C 65°C
 Discharge..... -10°C 65°C

Dimensions min max.
 Diameter..... 15 15,5
 Height (A/B)..... 5,6 6,1

Segment..... Photo

Main Applications..... Photo
 Electronic
 Car Alarm

Typical Capacities (at 20°C)

Discharge Type	Load	End Voltage:	0.9V
Continuous 24h/d, 7d/w Current [µA]	300 Ω	Time: [h]	48h
	5000	Capacity [mAh]:	200
		Energy [MWh]:	250

All Data contained herein is for single cells
 For battery applications, performance data may vary from single cell data, depending on specific battery configuration