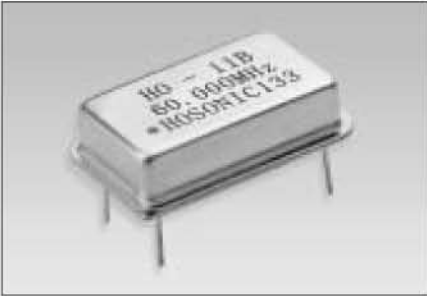




FULL SIZE CLOCK OSCILLATORS TTL COMPATIBLE

• HO-11 Series



The HO-11 series oscillator is TTL compatible and features fast rise/fall times with high reliability at low cost. The metal package with pin#7 case ground acts as shielding to minimize EMI radiation.

FEATURES

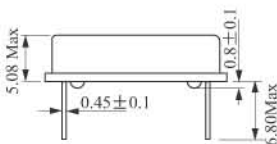
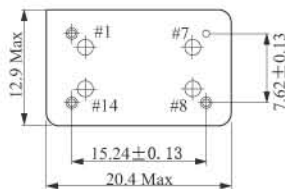
- 10TTL output Load
- 14 Pin Full Size
- Industry Standard
- Wide Frequency Range
- Low Cost
- Resistance Weld Package

Electrical Specifications

Parameter	Condition	HO-11
Frequency Range	F _O	0.5MHz~100.00MHz
Frequency Stability*	All Condition*	±25ppm, ±50ppm, ±100ppm
Operating Temperature Range	T _{OPR}	0°C~70°C(-40°C~+85°C option)
Storage Temperature Range	T _{STG}	-55°C~+125°C
Power supply Voltage	V _{DD}	5.0V±10%
Aging(First Year)	25°C ± 3°C	±5ppm
Supply Current	0.5MHz to 23.999MHz	15mA Max
	24.000MHz to 69.999MHz	30mA Max
	70.000MHz to 100.000MHz	60mA Max
Output Symmetry	Sym	At 1.4V 40/60%(45/55% Option)
Rise time	T _r	0.4V~2.4V 5 nS Max
Fall Time	T _f	2.4V~0.4V 5 nS Max
Output Voltage	V _{OH}	2.4 Vmin
	V _{OL}	0.4 Vmax
Output load	TTL Load	1~10TTL
Start-up Time	T _s	10mS Max

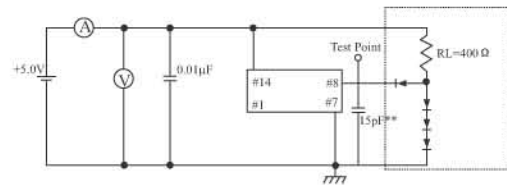
*Include: 25°C tolerance, operating temperature range, input voltage change, aging, load change, shock and vibration

Mechanical Dimensions(mm)



Pin	Connection
#1	N.C.
#7	GND
#8	Output
#14	V _{DD}

TTL Test Circuit



**Includes stray and probe capacitance

TTL Output Waveform

