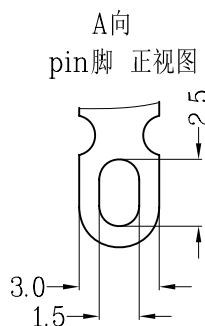
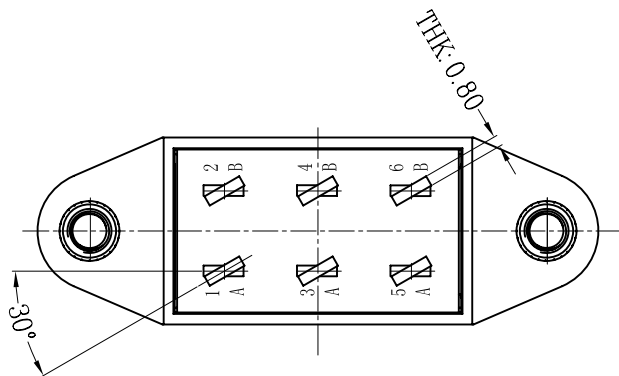
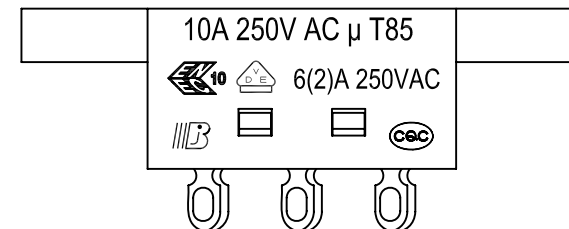
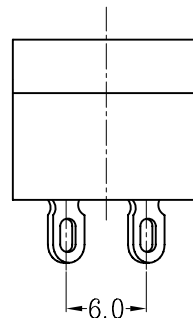
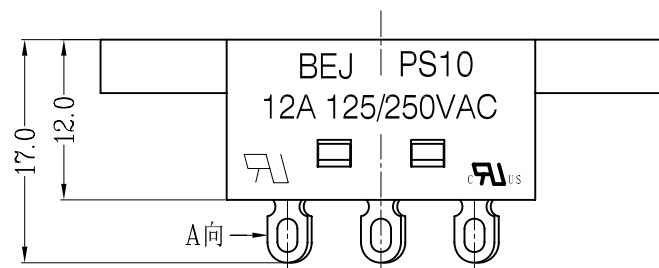
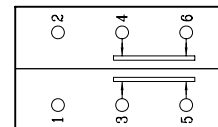
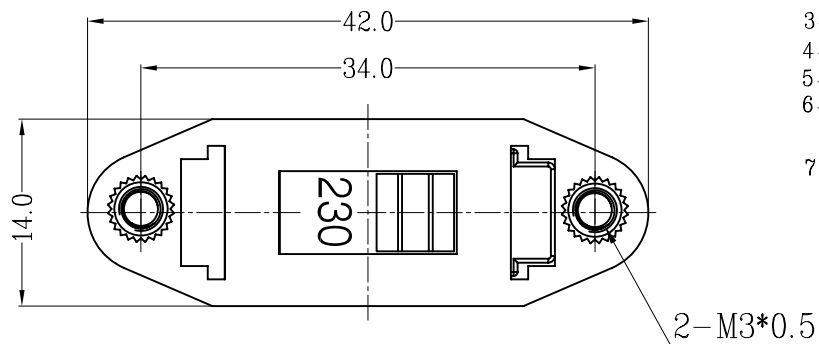
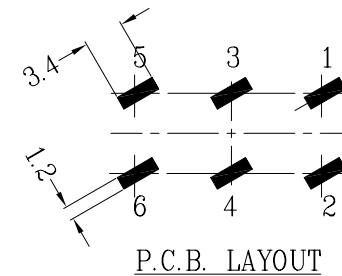


- 1、FUNCTION: 2P2T
- 2、RATING: UL: 12A 125/250VAC  
CQC: 6(2)A 250VAC  
ENEC VDE: 10A 250VAC  $\mu$  T85
- 3、OPERATION FORCE: 1200 $\pm$ 400g.f
- 4、CONTACT RESISTANCE:  $\leq$  50 m $\Omega$
- 5、INSULATION RESISTANCE:  $\geq$  100 M $\Omega$
- 6、DIELECTRIC WITHSTAND: TERMINAL TO BUTTON 3000VAC/5mA/1MINTUE  
TERMINAL TO TERMINAL 1500VAC/5mA/1MINTUE
- 7、CIRCUIT DIAGRAM:

8、SUGGESTED PANEL HOLE SIZE:



TOLERANCE UNLESS SPECIFIED				
.X: $\pm 0.30$ .XX: $\pm 0.15$ ANGULAR: $\pm 3.0^\circ$				
PROJECTION:		V1.0		
ISSUE	DATE	DESCRIPTIONS OF REVISION		APPD.
TITLE: <b>ROCKER SWITCH</b>		UNIT: mm	SCALE: NOT SCALE	DRWG NO.: <b>BEJ-FH-W0093</b>
MODEL: <b>PS10-4-B2R3B1-M6</b>		FUNCTION: <b>2P2T</b>		DWN. 黄荟荟 2017-01-05
贝尔佳电子有限公司 BEI ER JIA ELECTRONICS CO.,LTD				CHK'D. 冯辉 2017-01-05
				APPD. 谭云锋 2017-01-05