

HVLink PRO

PC software for downloading and analysis of test results and creation of test reports



The HVLink PRO software works in conjunction with Metrel newest HV insulation testers, Step Contact Voltage Measuring System and MicroOhms. The software automatically recognizes connected instrument and allows the customer to download test results saved on the instrument, review the results, rename and relocate data if needed and print test reports.

Key features:

- **Automatic recognition of the instrument:** when connecting your instrument to the PC it is automatically recognized by the software.
- **Tree view:** all the results are represented in tree view for easy data management.
- **Rearranging of structures:** the elements of the tree structure can be relocated and renamed.
- **R(t) graphs:** if graph R(t) was enabled when testing with the instrument MI 3200 or MI 3201 then it can be plotted and printed with the software.
- **Measurement tables:** if graph R(t) was enabled when testing with the instrument MI 3200 or MI 3201 then a table with fixed R(t) values can be viewed and printed.
- **Export of test results:** test results in text format can be exported to other programs (MS Excel, MS Word).
- **Automatic Test Report generation:** enables automatic generation of Test Report (low, medium and high detailed).

PC SW HVLink PRO is compatible with:

- MI 3200 TeraOhm 10 kV
- MI 3201 TeraOhm 5 kV Plus
- MI 3295 Step Contact Voltage Measuring System
- MI 3252 MicroOhm 100A

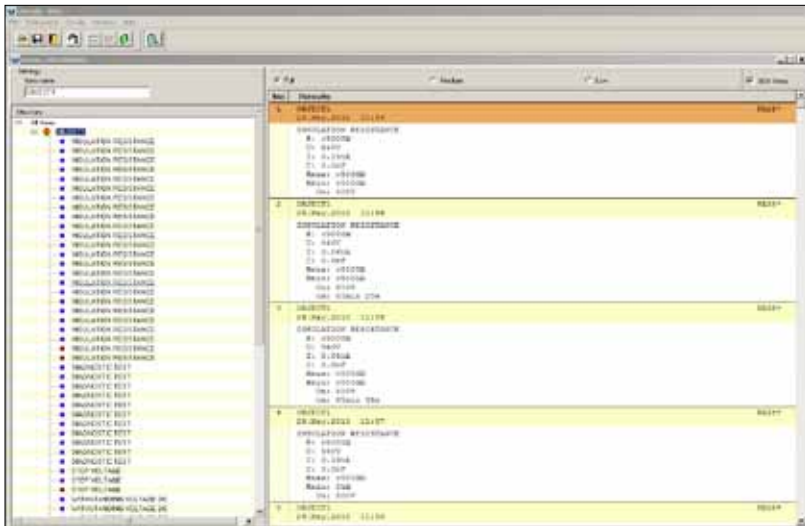
Password protection:

PC SW HVLink PRO is password protected for the following instruments:

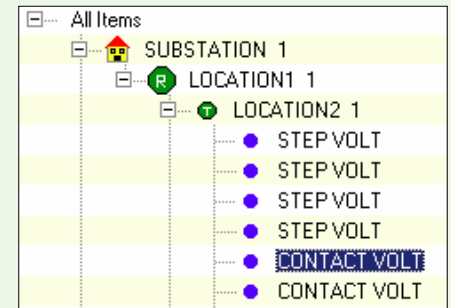
- MI 3200
- MI 3201

Ordering information:

- A 1275 PC SW HVLink PRO with USB and RS232-PS/2 cable



User friendly interface with tree view data structure and full, medium or low representation of test results



R(t) graph can be drawn for HV Insulation Resistance measuring functions



No	Time [hh:mm:ss]	Resistance	Voltage
1	00:00:15	> 4.05 TOhm	5,126 kV
2	00:00:33	1,1 GOhm	5,131 kV
3	00:01:00	1,02 GOhm	5,131 kV
4	00:02:00	9,80 GOhm	5,126 kV
5	00:03:00	502 GOhm	5,126 kV
6	00:04:00	506 GOhm	5,126 kV
7	00:05:00	502 GOhm	5,126 kV
8	00:06:01	19,9 MOhm	5,114 kV
9	00:07:00	1,02 GOhm	5,130 kV
10	00:08:00	2,03 GOhm	5,127 kV
11	00:09:00	49,9 MOhm	5,120 kV
12	00:10:00	50 MOhm	5,120 kV

Table with fixed R(t) values can be drawn for HV Insulation Resistance measuring functions

No	Time [hh:mm:ss]	Resistance	Voltage
1	00:00:15	1,05 MOhm	2447 kV
2	00:00:33	1,05 MOhm	2440 kV
3	00:01:00	1,02 MOhm	2438 kV
4	00:02:00	1,02 MOhm	2426 kV
5	--	--	--
6	--	--	--
7	--	--	--
8	--	--	--
9	--	--	--
10	--	--	--
11	--	--	--
12	--	--	--



METREL[®]

Measuring and Regulation Equipment Manufacturer

METREL d.d.
Ljubljanska 77
SI-1354 Horjul
Tel: + 386 (0)1 75 58 200
Fax: + 386 (0)1 75 49 226
E-mail: metrel@metrel.si
http://www.metrel.si

Note! Photographs in this catalogue may slightly differ from the instruments at the time of delivery. Subject to technical change without notice.